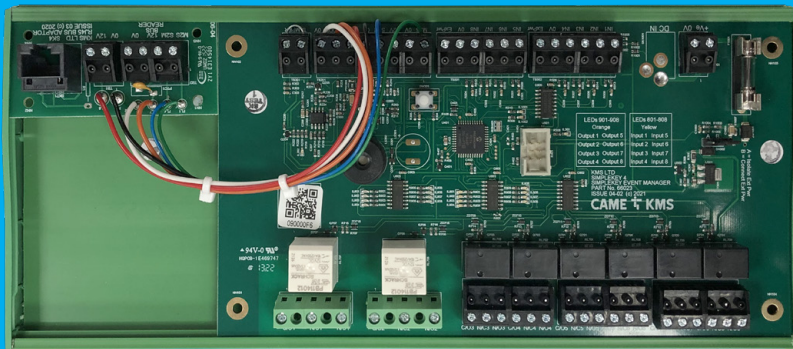


# 66023 SIMPLEKEY EVENT MANAGER

## MANAGER FOR SIMPLEKEY PLATFORM



SimpleKey Event Manager (SEM) allows additional building functions to be controlled and monitored when connected to a SimpleKey system controller.

Supplied in a DIN rail format with simple connections to the free topography CAME KMS bus, the SEM can connect in exactly the same way as other SimpleKey components.

The SEM works with the SimpleKey system to provide monitoring and control for additional on-site equipment i.e. lift control, emergency lighting, BMS alarms and analogue door entry integration.

With 8 programmable inputs and 8 programmable relays (2 rated at 10.0A and 6 at 1.0A) connected by the KMS BUS via either a plug-in RJ45 socket and/or standard terminal connector, whilst power for the pcb and optionally, the outputs is supplied via a separate 12V input. Each pcb has a unique QR code which identifies the components on the KMS BUS. Up to 4 SEMs can be connected to each SimpleKey System Controller.

### KEY BENEFITS OF SEM

- Control for up to 8 outputs which can be used for lift control, lighting management etc.
- Monitoring for up to 8 inputs which can be used for fire door management, cupboard access monitoring etc.
- Built in sounder and communication LED's.
- RJ45 & terminal connection for linking to the KMS BUS.
- Cloud based management with individual QR code identification enabling simpler setup and support.

### TECHNICAL INFORMATION

#### Power Connections

- 12 – 15V System input
- 250mA draw for PCB
- Optional 12V input for relays

#### Outputs

- 8 programmable relays
- NO or N/C connection
- 2 rated at 10A
- 6 rated at 1A

#### Monitoring

- Programmable inputs
- Monitoring for N/O or N/C
- Tamper

#### Communication

- Connects on KMS BUS
- Uses RJ 45 and/or screw connection

#### Dimensions

- DIN Rail 275mm long x 119mm wide

#### CAME KMS

A2 Glory Park, Glory Park Avenue, Wooburn Green HP10 0DF  
Tel: 01494 531099 Email: ckuk.info@came.com