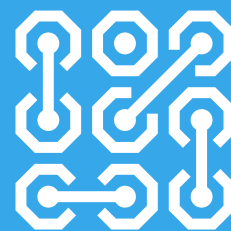


CAME ENTROTEC

CAME.COM/ENTROTEC



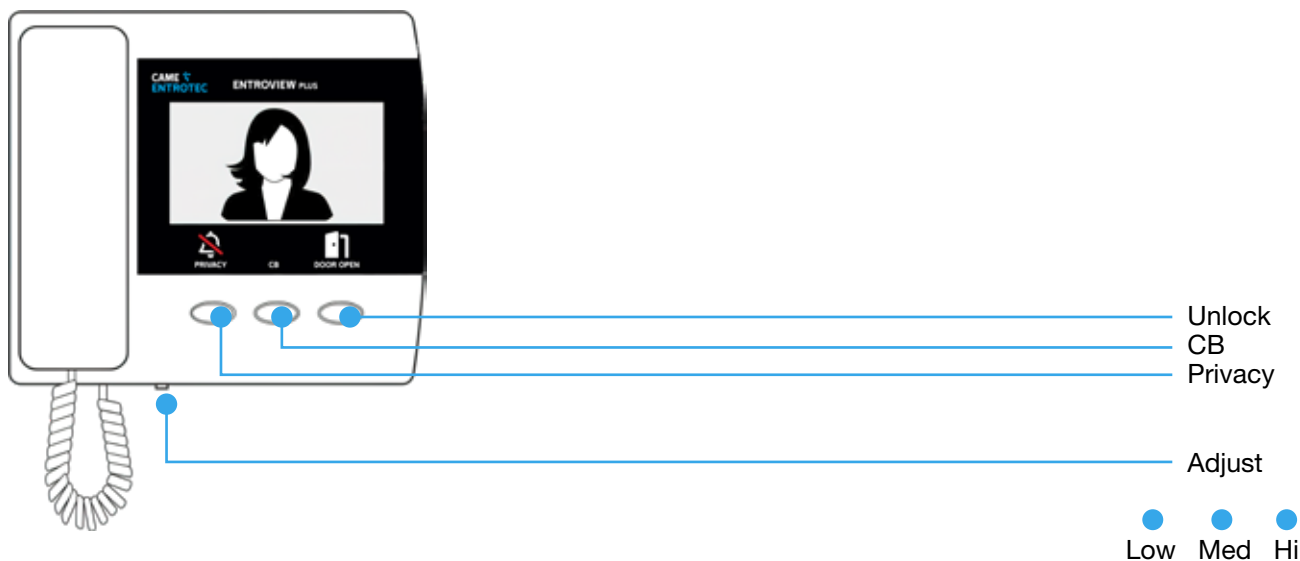
ENTROVIEW+ USER GUIDE



USER GUIDE

ENTROVIEW+ USER GUIDE

CAME 
ENTROTEC



WHEN SOMEONE CALLS

Lift the handset to answer an incoming call. The video monitor will display for the length of the call.

WHILE ON A CALL

To let the caller gain access, press **Unlock**.

Replace the handset to complete the call.

SILENCE A CALL

Press the **Privacy** button or Adjust the ringer volume with the slider.

KEEP IT QUIET

If you do not wish to be disturbed, press **Privacy**. The button will illuminate and the ringer is silenced. Press the button again to turn the ringer back on.

CB BUTTON

Concierge Button / Call Back / Camera Switch Button if applicable.

CABLE SPECIFICATION

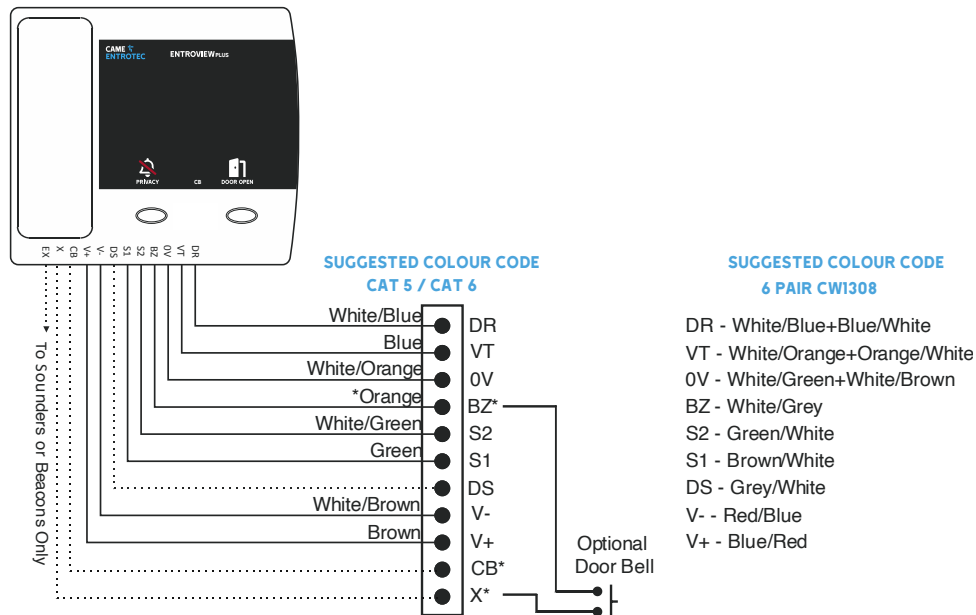
Cat 5e / Cat 6 / CW1308 6 Pair Minimum.

This does not allow for redundant cables. If this is a requirement then the installer must allow for this during installation.

10 Pair CW1308 recommended for cable runs exceeding 70 metres.

Any unused cores to be tied to system 0v.

WIRING DIAGRAM

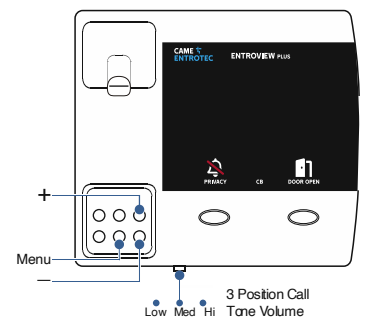


VIDEO SETUP

Press the Menu button to turn the screen on.

Press Menu to cycle through the on screen display options.

Press + or - to adjust the selected parameter. Once adjusted the settings will store and the screen will turn off.



OPTION SWITCHES

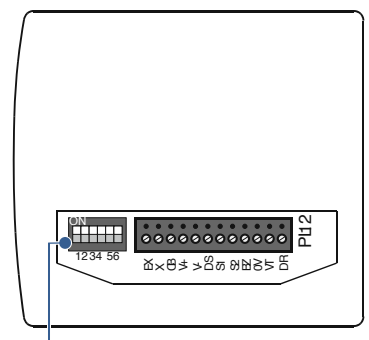
Switches **1, 2 & 3** select the privacy function options. Privacy can be: disabled completely, set to latch on/off or set to time out after a preset time (see table: 0 = OFF 1 = ON).

Switch **4** is for 1 way systems and should be ON for normal use.

Switch **5** is not used.

Switch **6** selects video termination and should be ON for normal use.

1	2	3	Time
0	0	0	On / Off
0	0	1	Disabled
0	1	0	5 mins
0	1	1	30 mins
1	0	0	1 hr
1	0	1	4 hrs
1	1	0	8 hrs
1	1	1	12 hrs



RINGTONES

To adjust the ringtone press and hold **Privacy** to start the ringer. Press **Privacy** to select the ringtone options and press **Door Open** to store.

CAME ENTROTEC

CAME ENTROTEC

5 Ashwood Court
Oakbank
Livingston
EH53 0TL

Tel: 01506 886230

Support: 01506 886235



© 2022 - EN - EV+GUIDE1222

YOU MAY NOT EVEN PARTIALLY REPRODUCE THIS DOCUMENT

CAME RESERVES THE RIGHT TO MAKE ANY CHANGES TO THIS DOCUMENT AT ANY TIME

THE DATA AND INFORMATION SHOWN IN THIS CATALOGUE ARE SUBJECT TO CHANGE WITHOUT OBLIGATION TO GIVE PRIOR NOTICE BY CAME S.P.A, E&OE



CAME S.p.A.

Came cancelli automatici S.p.A.
is certified for Quality and Environment

UNI EN ISO 9001

UNI EN ISO 14001

BS OHSAS 18001

[CAME.COM/ENTROTEC](https://www.came.com/entrotec)