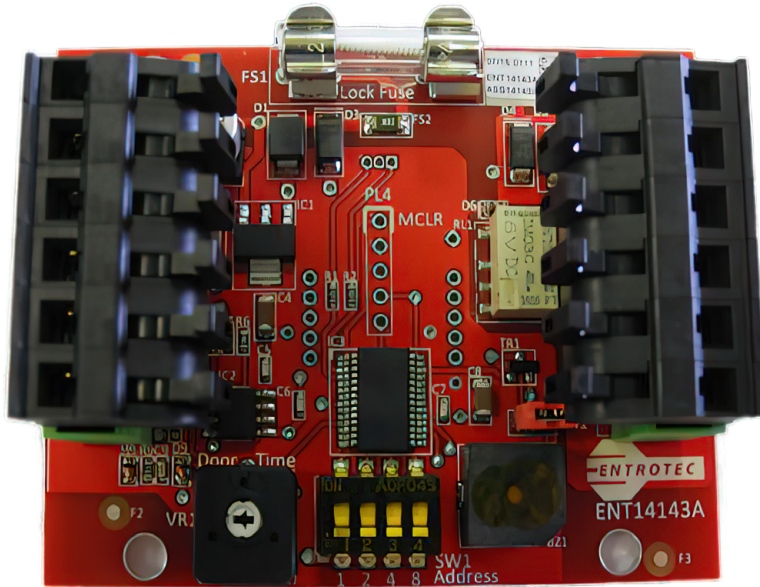


MULTI FUNCTION RELAY

Multipurpose Smart Switching



Overview

- Single Pole Changeover Relay
- Negative Trigger
- Adjustable Time
- RS485 Data Controlled
- Volt-Free Connections
- Fused Power Output
- Easy Installation
- Panel or Chassis Mountable

Typical Applications

- When used on Apex systems, software programmable for Secure Lock connection (Secured By Design), Inner Door Interface, Lift Control Module
- Interfacing to 3rd party equipment such as automatic door openers
- Timed relay switch
- Providing additional volt free relay connections

Technical characteristics

Nominal Coil Voltage	5V DC
Max Switch Capacity	2A @ 250VAC
Power	65mA active at 13.8VDC, 20mA quiescent at 13.8VDC
Temp. Range	-25 C to +70 C
Life	1,000,000 Mechanical Operations
Operation Time	Max 5ms to Operate / Release
Dimensions	55mm Height, 70mm Width, 25mm Depth