

**FH01916-EN**

**ED5**

CE

UK

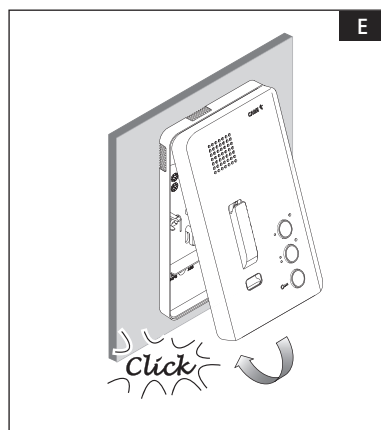
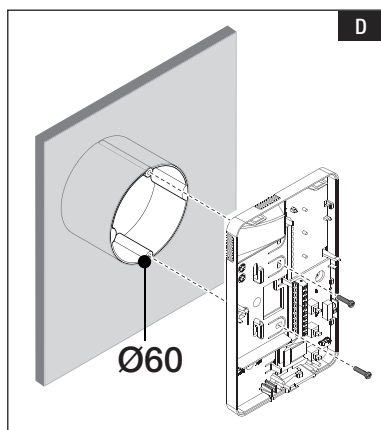
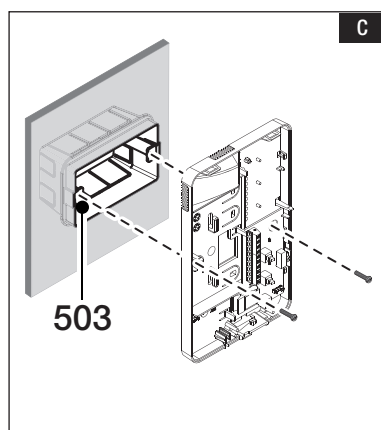
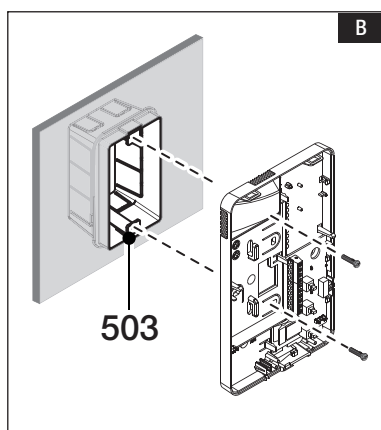
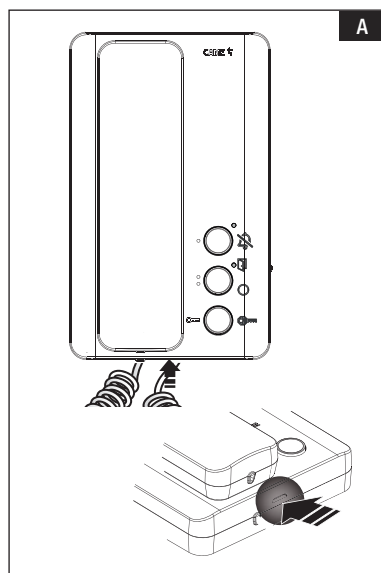
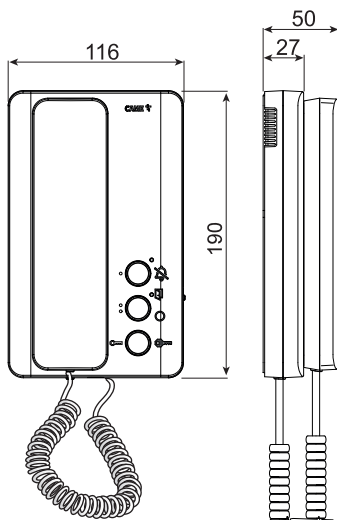
EN

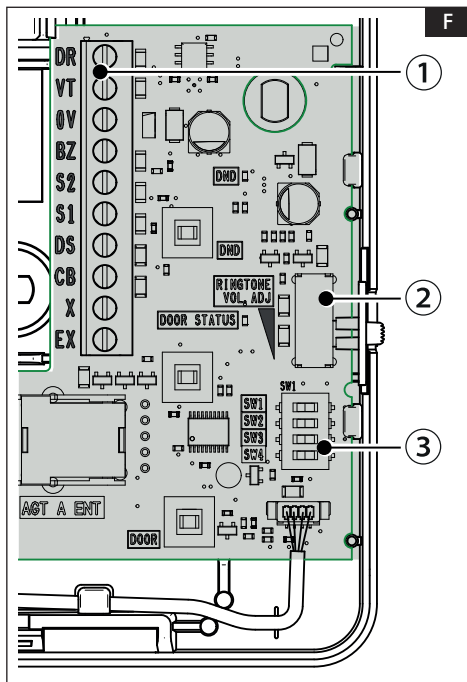
English

**CAME ENTROTEC**

5 Ashwood Court,  
Oakbank,  
Livingston EH53 0TL -  
United Kingdom  
tel. (+44) 01506 886230  
- support (+44) 01506  
886235  
[www.came.com/entrotec](http://www.came.com/entrotec)

**CAME.COM**





**F**

## GENERAL PRECAUTIONS

Read the instructions carefully before beginning the installation and carry out the procedures as specified by the manufacturer. • Installation, programming, commissioning and maintenance must only be carried out by qualified, expert technicians and in full compliance with the applicable law. • Before carrying out any cleaning or maintenance, disconnect the device from the power supply. • Only use this product for its intended purpose. Any other use is hazardous. • Came S.p.A. is not liable for any damage caused by improper, erroneous or unreasonable use. • Do not obstruct the ventilation or heat dissipation vents or slots. • Il prodotto è conforme alle direttive applicabili, vigenti al momento della fabbricazione.

## DESCRIPTION

Intercom internal audio receiver.

## Technical data

Type	ED5
Volume	84dB SPL Max (at 1 metre)
Operating Voltage	12-15VDC (13.8V Nominal)
Power	~0.01W Idle, 2.6W Active
Connections	11 Way Screw Terminals
Dimensions	(WxHxD) 96 x 206 x 49mm (approx. not including cable)

## INSTALLING

Open the device by pressing on the tab at the bottom and separate the shell from the bottom of the device. **A**

Fasten the bottom of the device to the box on the wall. **B C D**

⚠ **Avoid overtightening the screws.**

📖 **The box must be installed at an appropriate height for the user.**

Once all connections have been made, reattach the shell to the bottom of the device. **E**

## HANDSET CONNECTION

### **F** Control board

#### ① Terminal block

Preferred colour coding for wiring handsets			Function
DR	White/Blue	DR 1	Door release
VT	Blue/White	VT 2	12VDC input
OV	White/Orange	OV 3	Common
BZ	Orange/White	BZ 4	Ringtone signal
S2	White/Green	S2 5	Audio from handset mic.
S1	Green/White	S1 6	Audio to handset spk.
DS	White/Brown	DS 7	Door status LED
CB	-	-	Call back
EX	-	-	External sounder

② Ringtone volume switch

③ Timer switch

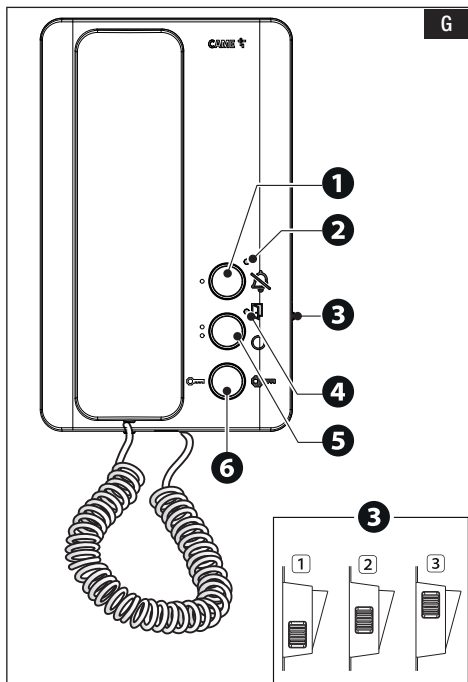
## Installer Please Note

ED5 handsets have a setting for older systems (Vertex, Elite and RDC's). If the ringer fades, turn SW4 ON for legacy operation.

Switches SW1, SW2, SW3 select the privacy function options. Privacy can be: disabled completely, set to latch on/off or set to time out after a preset time (see table below).

Ringtone volume can be adjusted using the slideswitch.

SW1	SW2	SW3	SW4	Meaning
ON	ON	ON		On/Off (latching - no timeout)
ON	ON	OFF		Disabled
ON	OFF	ON		5 minute timeout
ON	OFF	OFF		15 minute timeout
OFF	ON	ON		30 minute timeout
OFF	ON	OFF		1 hour timeout
OFF	OFF	ON		4 hour timeout
OFF	OFF	OFF		8 hour timeout
			OFF	Normal operation
			ON	Legacy operation



G

## When someone calls

Lift the receiver to answer an incoming call.

## While on a call

To allow the visitor access, press **6** Unlock. Replace the receiver to complete the call.

## Silence a call

Press **1** the Privacy button, or adjust **3** the Ringer volume.

## Keeping things quiet

If you do not wish to be disturbed, press **1** the Privacy button. The LED **2** will illuminate and the ringer is silenced. Press the button again to turn the ringer back on.

## CB button

Multi-function button - Concierge button / Call back if applicable.

## USER INSTRUCTIONS

### General notes

The intercom system is designed so that you have a limited time to answer a call and allow the visitor access or not. After this time, the system will reset for the next visitor.

### G Buttons function

- 1** Privacy button
- 2** Privacy ON LED
- 3** Ringer volume setting

<b>1</b>	<b>2</b>	<b>3</b>
Low volume	Medium volume	Maximum volume

- 4** Door open LED
- 5** CB button
- 6** Unlockbutton

**CAME**   
**ENTROTEC**

### CAME ENTROTEC

5 Ashwood Court,  
Oakbank,  
Livingston EH53 0TL - United Kingdom  
tel. (+44) 01506 886230 - support (+44) 01506  
886235  
[www.came.com/entrotec](http://www.came.com/entrotec)