

# CAME PARKARE

MORE THAN  
**50+**  
YEARS



# PKX

Parking control  
systems



Please note that certain features described in this document are optional and must be agreed upon in advance to be included in your system.

For further details, please request a personalised offer or contact our sales.



# INDEX

<b>01 &gt; NEW TERMINALS PKX .....</b>	<b>4</b>
<b>01.01 &gt; GENERAL FEATURES .....</b>	<b>5</b>
<b>01.02 &gt; PKX ENTRY TERMINAL .....</b>	<b>10</b>
<b>01.03 &gt; PKX EXIT TERMINAL .....</b>	<b>11</b>
<b>01.04 &gt; PKX AUTOMATIC PAYMENT STATION .....</b>	<b>12</b>
<b>01.05 &gt; PKX CASHLESS PAYMENT STATION .....</b>	<b>13</b>
<b>01.06 &gt; MFK - MULTI-FUNCTION KIOSK .....</b>	<b>14</b>
<b>01.07 &gt; GARD PX BARRIER .....</b>	<b>15</b>
<b>01.08 &gt; PEDESTRIAN ACCESS READER .....</b>	<b>16</b>
<b>01.09 &gt; MANUAL CASHIER .....</b>	<b>17</b>
<b>02 &gt; LINCE 7 CONTROL &amp; MANAGEMENT SOFTWARE</b>	<b>18</b>
<b>02.01 &gt; GENERAL FEATURES .....</b>	<b>21</b>
<b>03 &gt; THE COMPANY.....</b>	<b>26</b>
<b>03.01 &gt; THE CAME GROUP .....</b>	<b>27</b>
<b>03.02 &gt; CAME PARKARE .....</b>	<b>30</b>

# 01



# NEW TERMINALS

# PKX

## PKX

**DESIGNED  
FOR TODAY,  
RELIABLE AS  
ALWAYS**

Incorporating the latest innovations and engineered to meet the evolving demands of the industry, PKX has been developed as an open platform to meet current and future challenges while maintaining the reliability, high performance, and advanced features that define CAME Parkare systems.

This open platform makes it the ideal solution for any car park, including high-turnover sites where security, dependability, and cost-effectiveness are essential.



# 01.01 > GENERAL FEATURES

## TERMINAL DESIGN & ENGINEERING

### MANUFACTURING MATERIALS

All our equipment is made from premium, durable materials that ensure product longevity and enable sustainable recycling when decommissioned.

All PKX components comply with the RoHS directive, ensuring they are environmentally friendly. The design prioritises optimal functionality and safety, both active and passive, in the event of misuse or accidents.

Terminals are constructed with 1.5 mm AISI stainless steel, which resists corrosion whatever the environment.

### TERMINAL DESIGN

For the design of the different PKX terminals, a simple, safe and reliable interface has been developed for both end users and maintenance personnel.

At the same time, the original ergonomic and aesthetic principles have been retained in the exterior design of each terminal, ensuring they blend seamlessly into any environment.

# PKX

## ENTRY AND EXIT TERMINALS

As part of our **open platform**, PKX entry and exit terminals are equipped with a **7-inch widescreen display** for excellent visibility and can issue **over 5,000 tickets** at the entry point.

They are designed with a **simple, intuitive structure** and configuration to ensure uninterrupted operation with **minimal maintenance**.

**Fully compatible with the latest version of our LINCE 7 PMS**, they can be configured for any operating mode – from **traditional ticket issuance** to dynamic, **ticketless, free-flow** entry and exit.



### THERMAL PRINTER

More than 5,000 tickets



### HIGH EFFICIENCY

High performance adapted to any budget



### HIGH VISIBILITY

7" TFT display in widescreen format



### MONITORABLE

Remote management



### DYNAMIC ENTRY / EXIT

Without stopping



### QR TECHNOLOGY

Integration with 3<sup>rd</sup> Party and Apps



### LOW MAINTENANCE

Ongoing operation



### PC TECHNOLOGY

Greater versatility

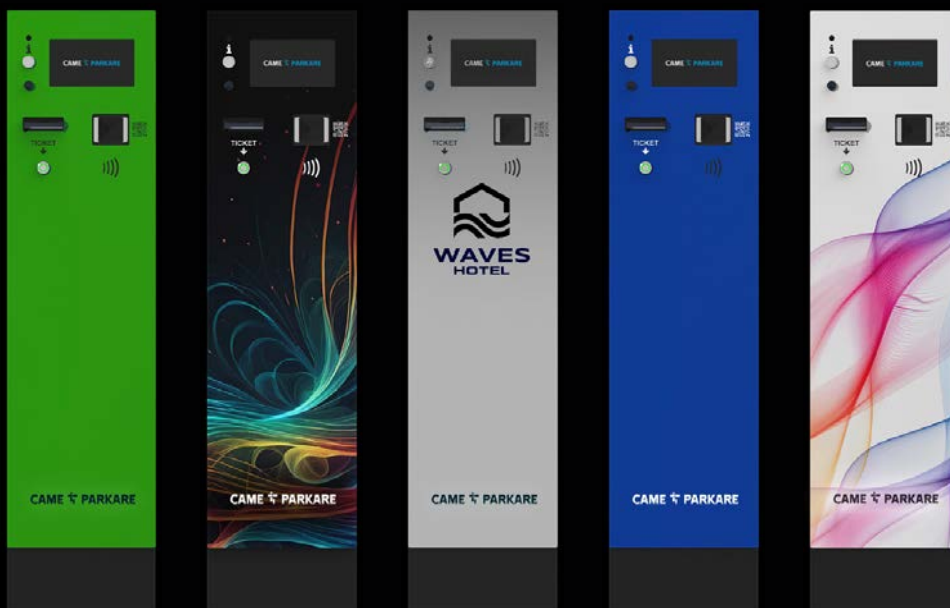


# CUSTOMISE YOUR CAR PARK

Standard PKX terminals are finished in dark grey and black with a methacrylate coated front panel.

Optionally, they can be customised in a wide range of colours including the RAL colour system or bespoke shades, and can incorporate unique graphic design to add sophistication or align with a desired corporate image.

The TGIC-free polyester powder coating, oven-cured, is specially formulated for aluminium and steel surfaces, ensuring maximum durability outdoors. This high-quality finish offers excellent resistance to weathering and sunlight, in compliance with international QUALICOAT standards.



# PKX

## AUTOMATIC PAYMENT STATION

Designed to maximise car park profitability, the **PKX Automatic Payment Station** — part of our open platform — uses **low-maintenance, reliable components**, making it a complete multifunction unit that **operates dependably in unattended mode**.

It can process **all payment methods** while also serving as an **information point, assistance terminal, advertising display, and sales kiosk** for products and customised services, thanks to its 23.8-inch portrait touchscreen.

Fully compatible with **the latest version of our LINCE 7 PMS**, it supports every payment configuration — from traditional physical ticketing to ticketless options using licence plate recognition and virtual tickets.



23.8"

### 23.8" TOUCHSCREEN

Portrait format

### VIDEO ASSISTANCE

Easy communication with the user



### QR TECHNOLOGY

Integration with 3<sup>rd</sup> Party and Apps



### MULTIFUNCTION STATION

Kiosk for different uses



### THERMAL PRINTER

Maximum availability for the issuance of products and/or receipts



### REMOTELY ATTENDED

Low cost supervision



### LOW MAINTENANCE

Ongoing operation



**DESIGNED FOR TODAY,  
RELIABLE AS ALWAYS**



# 01.02 > PKX

## ENTRY TERMINAL



### FEATURES

Some of the components/devices may be optional.

#### USER INTERFACE

- 7" widescreen display.
- Multi-language operation.
- Sleep mode for low power consumption.

#### COMPONENTS

- Embedded PC based on x86 architecture with SSD storage.
- 2" thermal printer with a long-lasting printhead, integrated cutter, and ticket presence detector. Capable of issuing barcode or QR code tickets and printing parking access details (date, time, terminal number...).
- Ticket roll ( 58 x 190 x 25,4 ) made of thermal paper with a weight of 105g/m<sup>2</sup>.
- End-of-roll detection.
- Internal ventilation system.
- Heating system.
- RFID proximity card reader for subscriber control and integrated QR reader.
- IP intercom based on SIP protocol for communication with the central office.
- Pinhole camera for facial image capture.

#### COMMUNICATIONS

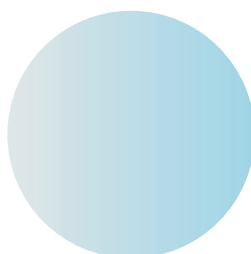
- Ethernet communications protocol (TCP/IP).
- Barrier controlled via GPIO and/or IP intercom.

#### EXTERNAL FINISH AND SECURITY

- 1.5 mm AISI 430 stainless steel housing, polyester powder-coated and oven-dried, suitable for outdoor use.
- Single side door.
- Height x Width x Depth (mm):  
1095 x 270 x 325.

#### OTHER FEATURES

- Self-adjusting vehicle presence detection:
  - Single (passenger cars)
  - Double (passenger cars and motorcycles)
- Ticket issuance: manual activation (button) or automatic (vehicle presence).



## EXIT TERMINAL



### FEATURES

Some of the components/devices may be optional.

#### USER INTERFACE

- 7" widescreen display.
- Multi-language operation.
- Sleep mode for low power consumption.

#### COMPONENTS

- Embedded PC based on x86 architecture with SSD storage.
- Internal ventilation system.
- Heating system.
- RFID proximity card reader for subscriber control and integrated QR reader.
- IP intercom based on SIP protocol for communication with the central office.
- Integrated camera for facial image capture.

#### COMMUNICATIONS

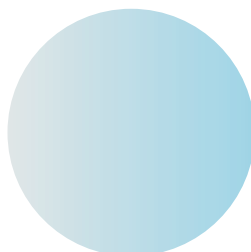
- Ethernet communications protocol (TCP/IP).
- Barrier controlled via GPIO and/or IP intercom.

#### EXTERNAL FINISH AND SECURITY

- 1.5 mm AISI 430 stainless steel housing, polyester powder-coated and oven-dried, suitable for outdoor use.
- Single side door.
- Height x Width x Depth (mm):  
1095 x 270 x 325.

#### OTHER FEATURES

- Self-adjusting vehicle presence detection:
  - Single (passenger cars)
  - Double (passenger cars and motorcycles)



## AUTOMATIC PAYMENT STATION



### FEATURES

Some of the components/devices may be optional.

#### USER INTERFACE

- 23.8" touch screen in portrait format.
- Operation in 4 languages (defined by the customer).
- IP intercom based on SIP protocol for communication with the central office.
- Sleep mode for low power consumption.
- Low-latency facial camera integrable with the intercom.
- High-brightness outdoor screen (optional).

#### COMPONENTS

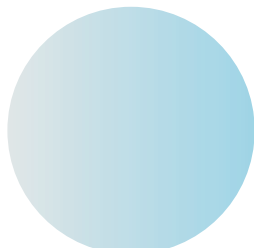
- Embedded PC based on x86 architecture with SSD storage.
- Internal ventilation system.
- Heating system.
- RFID proximity card reader for subscriber control and integrated QR reader with the capacity to read codes on ticket support, printed paper and mobile devices (smartphones, tablets...).
- Thermal receipt printer and/or ticket issuer.
- Uninterruptible power supply system (UPS), which allows the cashier to complete ongoing operations in the event of a power failure.

#### PAYMENT MODULES

- EMV reader for credit card with chip and proximity payments (NFC). Keyboard module the introduction of PIN code, optional.
- Banknote reader, with capacity to read 64 different banknotes on 4 sides and escrow function. It has a 300 banknote stacker (optional).
- Banknote acceptor with recycler system (optional). It has multiescrow and recycling capacity for 2 denominations, with up to 30 banknotes in each recycler hopper. Single slot.
- Coins module with change giving, accepting up to 16 denominations of different coins and automatic return of 4 different values.
- 3 self-charging coin hoppers, with capacity of 750 coins/each.
- 1 manual reload hopper (optional) configurable for 750 coins or 1.500 coins capacity.

#### EXTERNAL FINISH AND SECURITY

- 2 mm AP02 steel sheet cabinet, with anti-corrosion coating and powder-coated with polyester resins, free of TGIC.
- Front door with security lock and multiple locking points.
- Micro sensors for detection: door opening, lock, coin box removal, hoppers removal and note box removal.
- Height x Width x Depth (mm): 1485 x 740 x 500.  
\* Please consult the different available heights (1485 – 1685 mm)



## CASHLESS PAYMENT STATION



### FEATURES

Some of the components/devices may be optional.

#### USER INTERFACE

- 15.6" touchscreen in portrait format.
- Operation in 4 languages (defined by the customer).
- IP intercom based on SIP protocol for communication with the central office.
- Sleep mode for low power consumption.
- Low-latency facial camera integrable with the intercom.
- High-brightness outdoor screen (optional).

#### COMPONENTS

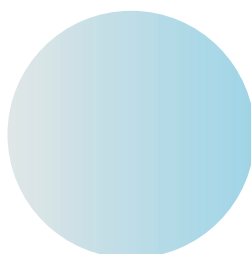
- Embedded PC based on x86 architecture with SSD storage.
- Internal ventilation system.
- Heating system.
- RFID proximity card reader for subscriber control and integrated QR reader with the capacity to read codes on ticket support, printed paper and mobile devices (smartphones, tablets...).
- Thermal receipt printer and/or ticket issuer.
- Uninterruptible power supply system (UPS), which allows the cashier to complete ongoing operations in the event of a power failure.

#### PAYMENT MODULES

- EMV reader for credit card with chip and proximity payments (NFC). Keyboard module the introduction of PIN code, optional.

#### EXTERNAL FINISH AND SECURITY

- 2 mm AP02 steel sheet cabinet, with anti-corrosion coating and powder-coated with polyester resins, free of TGIC.
- Front door with security lock and multiple locking points.
- Micro sensor for door opening detection.
- Height x Width x Depth (mm): 1485 x 350 x 250.



## MULTI-FUNCTION KIOSK



### FEATURES

Some of the components/devices may be optional.

The CAME Parkare Multi-Function Kiosk has been designed for online operation and allows for configuration adapted to the needs of each client, facilitating payment via physical or virtual ticket (ticketless system) and its use for selling products, or applying promotions and offers, among others. Accept electronic payment quickly and safely in any form (credit and debit cards using chip & pin or contactless including ApplePay and Google Pay.)

### USER INTERFACE

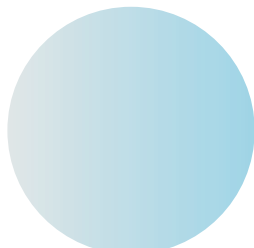
- 24" widescreen TFT touch screen
- 32" TFT screen for advertising
- Operation in 4 languages (defined by the client).
- IP intercom based on SIP protocols, for communication with switchboard.
- Low latency facial camera, integrable with the intercom

### COMPONENTS

- QR reader (1D/2D), with the capacity to read codes on ticket support, printed paper and mobile devices (smartphones, tablets...).
- Proximity card reader (NFC) (ISO 14443, ISO 18092).
- Thermal receipt printer.
- Embedded
- PC based on x86 architecture and SSD support for data storage
- EMV (All in One) reader for payment with credit bank cards with Chip and/or proximity (NFC)

### EXTERNAL FINISH AND SECURITY

- Cabinet made of 2 mm AP02 sheet steel.
- 2 mm thick front door, with impact-resistant closure to the cabinet with a 2 mm latch anchor point.
- Available in dark grey and white aluminium (5368A0837 and RAL 9006).
- Height x Width x Depth (mm): 1424 x 670 x 412.



# 01.07 > GARD PX BARRIER



## FEATURES

Opening time (s):	<b>1.2 ÷ 2.4</b>
Protection rate:	<b>IP54</b>
MCBF *:	<b>5,000,000</b>

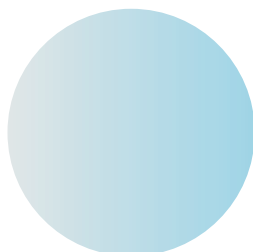
\* Mean cycles between failures.

The GARD PX Barrier has been developed to meet the most demanding needs in high duty cycle facilities. It is equipped with a **brushless** motor, which makes it possible to offer:

- Minimal maintenance due to the absence of brushes in the motor.
- Ability to maintain or increase torque at different speeds.
- Brushless motors have a smaller size, better heat dissipation, lower noise and higher operating speeds.

Thanks to **brushless** technology, opening manoeuvring speeds of 1.2 to 2.4 seconds are achieved, depending on the arm length, operating its motion with advanced and linear control.

Other advanced features include easy access to control electronics, as well as a wide range of accessories, operations counter for preventive maintenance and a practical system of arm unlocking by safety key, in case the parking operator so requires.



# 01.08 > PEDESTRIAN ACCESS READER



## FEATURES

Some of the components/devices may be optional.

### USER INTERFACE

- 6.5" touch screen, including an alphanumeric keyboard.
- SIP based protocol IP Intercom for communications with Central IP Intercom.
- Low latency face camera, integrable with intercom.
- Green LED for power.
- Red (unidentified) and green (identified) operating LEDs.
- User presence detector.

### COMPONENTS

- 1D/2D (QR) barcode reader, capable of reading printed tickets and mobile devices (smartphones, tablets...).
- Proximity card reader.
- Embedded PC based on x86 architecture and SSD support for data storage.
- Electric security lock (power supply not included).
- Technical box (inside).
- Associated door status signal or input: opened or closed.
- Internal ventilation system.

### COMMUNICATIONS

- Ethernet communications protocol (TCP/IP).
- Barrier controlled by GPIO.

### EXTERNAL FINISH AND SECURITY

- Cabinet AISI 430 stainless steel housing, powder-coated polyester, oven-dried, suitable for outdoor use.



# 01.09 > MANUAL CASHIER



## FEATURES

The Manual Cashier provides a complete face-to-face service point, located close to users, with the ability to handle payments, manage subscriber or system cards, access parking data, and resolve any issues — all in one compact unit. It delivers maximum functionality and performance in minimal space.

Equipped with LINCE software, a modern user interface, and a touchscreen, the Manual Cashier makes system management straightforward and offers access to a wide range of additional features beyond payment collection.

- Proprietary software for parking control and management LINCE 7.0.
- Access restricted by identification and differential key according to user profiles.
- Automatic rates calculation.
- Collection and validation of tickets. Recoding and printing of the entry ticket, once paid, for use at the exit terminal.
- Product generation. Coding, recording of system cards, service, subscribers or vouchers.
- Multiple payment means. Administration of any payment method (cash, discounts, vouchers, credit).
- Troubleshooting. Administration of payment of illegible or lost tickets, time exceeded, etc.
- Access control. Barrier opening / closing from the keyboard (Manual Cashier exit mode).

### MONOBLOCK Manual Cashier



### ALL IN ONE Manual Cashier



# 02



# LINCE 7 CONTROL & MANAGEMENT SOFTWARE

“ **LINCE 7** is the newest, most powerful version of the management and control software for our parking systems



**LINCE 7** brings together all car park products and services to deliver the best possible parking experience for users and maximise operational performance for our customers.

Our priority is to meet our customers' current requirements while staying ahead of future demands.

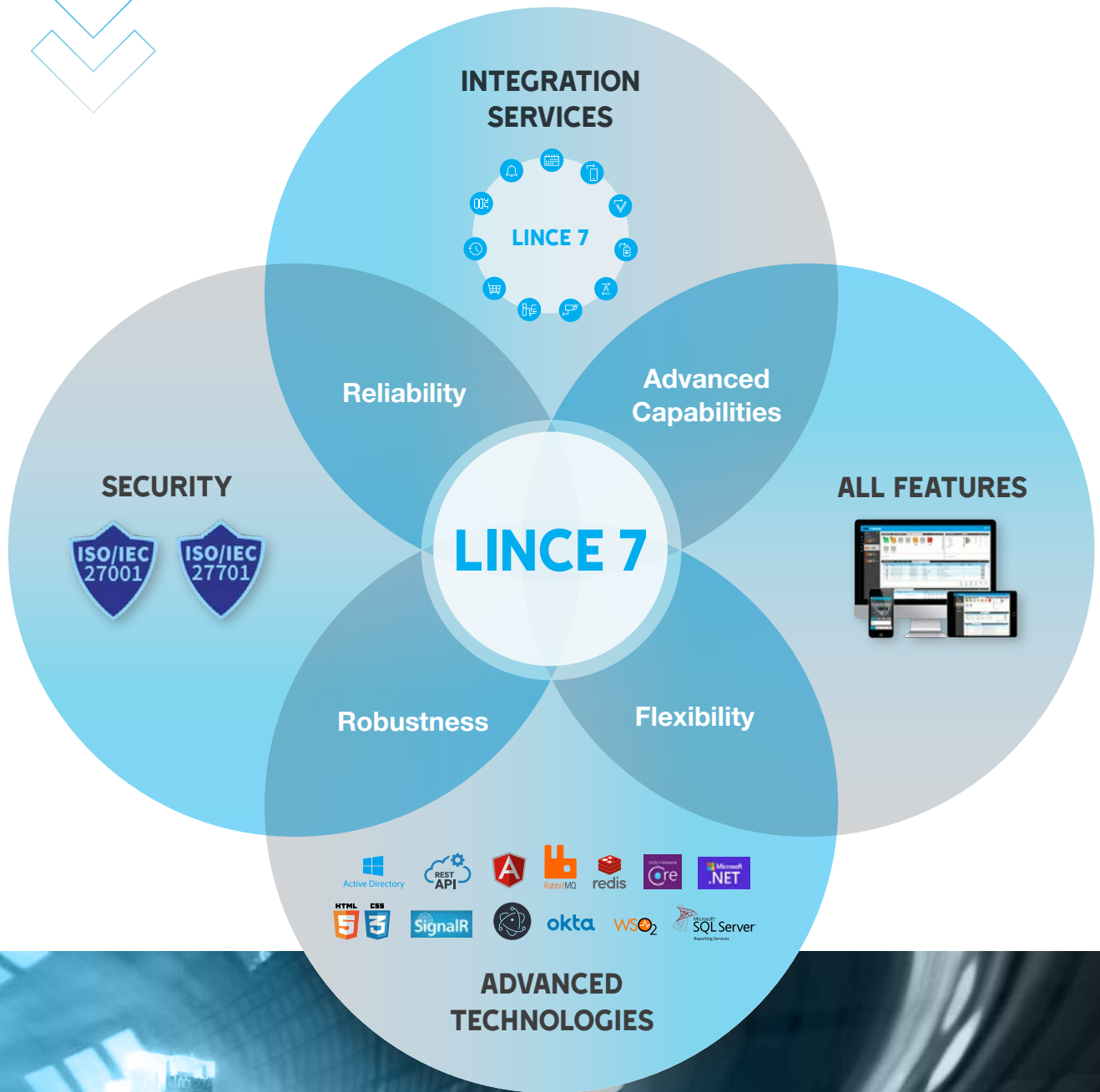
The new **LINCE 7** interface has been designed with a strong focus on usability, offering a simple and intuitive management experience.

It is user-friendly, with a modern, responsive design that works seamlessly on PC, tablet, or smartphone.

**LINCE** software is continuously updated with new features and capabilities to keep pace with technological developments and market trends.



# OUR CORNERSTONE





# LINCE 7

**REAL MULTI-PARKING  
SYSTEM**

## 02.01 > GENERAL FEATURES

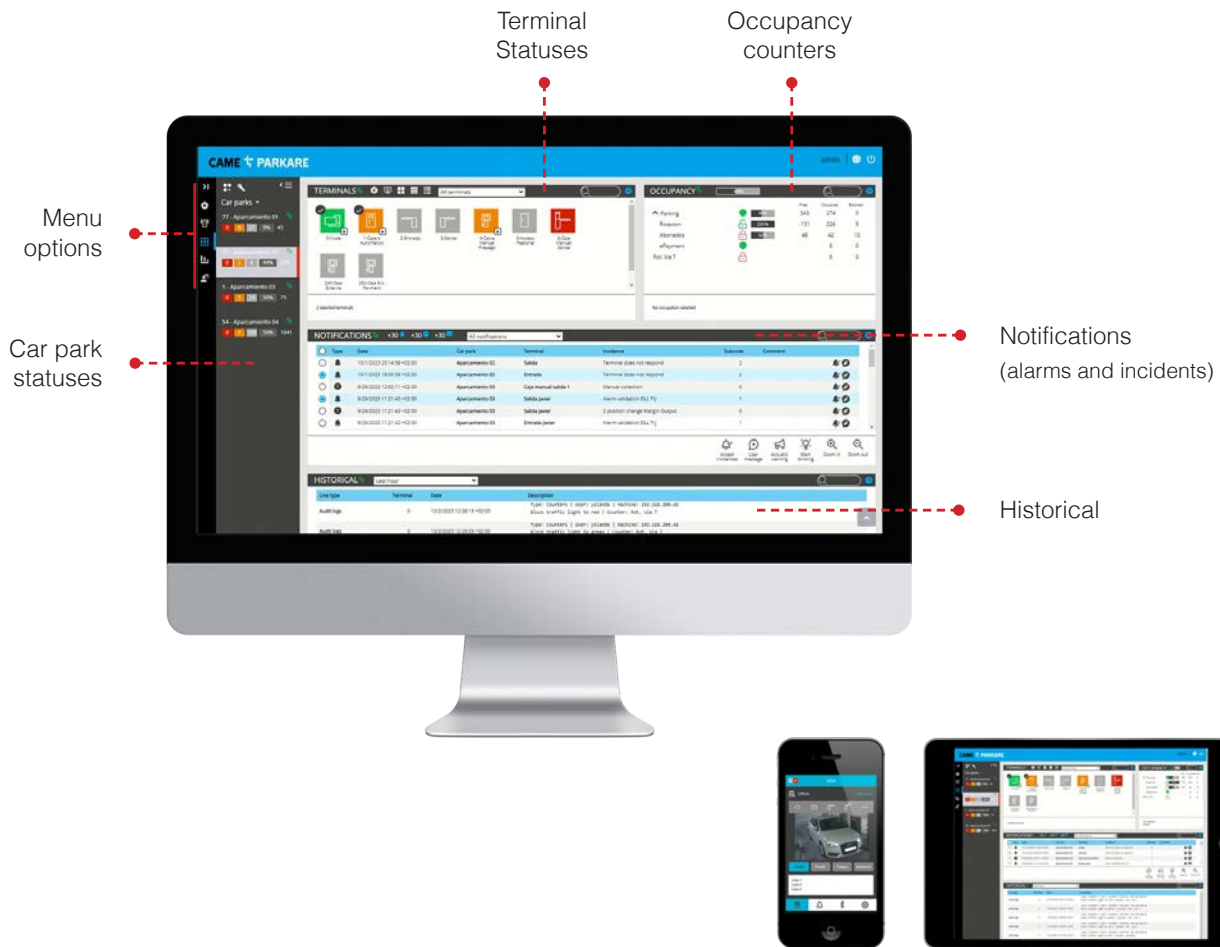


- ✓ **High flexibility and reliability.**  
Provides solutions to customers' needs
- ✓ **Advanced functionalities**  
for high-demand operations
- ✓ Easy and intuitive interface, with improved **user-friendly** design
- ✓ **Expanded system capabilities:**  
integration with third-party products and services
- ✓ **Responsive design**  
( PC, tablet or smartphone )
- ✓ **Multi-parking:** monitor one or multiple car parks in real time from a single screen
- ✓ Connection from anywhere.  
No need for software installation.  
Only a **connection to a web browser** is required: Safari, Chrome, Firefox, Edge...
- ✓ **Access from any operating system:**  
Microsoft Windows®, Linux, macOS, iOS, Android, etc.
- ✓ Fully **customisable** to present information tailored to **each user profile**
- ✓ **Multi language:**  
Users can choose the language of their web interface, including support for both RTL and LTR scripts



## MONITORING & CONTROL

The Control application provides centralised oversight of car park and terminal status, tracks occupancy with dedicated counters, and manages all alarm notifications, exceptions, and user messages for the entire car park network.



All Operator Workstations running the **MONITORING AND CONTROL** Application are fully synchronised, so any action performed on one is instantly reflected on the others. The system also offers extensive search and filtering options for greater ease of use.

To simplify the management of large car parks with multiple zones or areas, terminals can be grouped within the terminal panel to suit the user's needs.

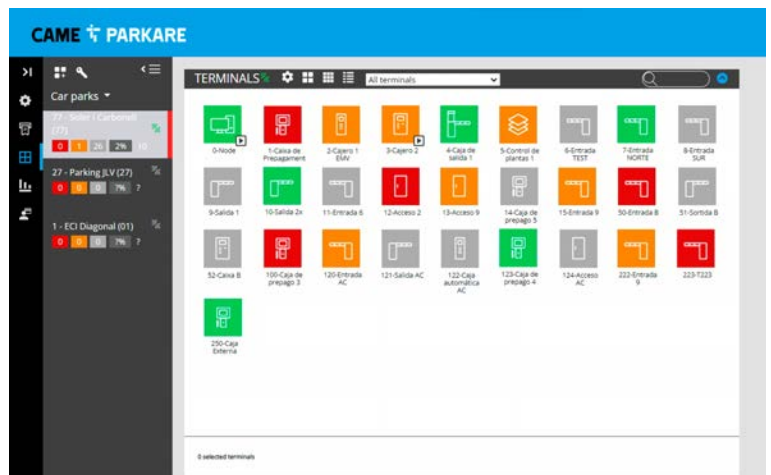
# FEATURES

- Remote control of all car parks from any device and location.
- Monitoring the status of all car parks with multi-level drill-down: from an overall view down to each terminal and individual device status.
- Fully configurable panels: customisable position and size of the panels.
- Synchronisation on all devices, in real time.

# TERMINALS



- Monitoring of the status and control of each terminal.
- Real-time visualisation of terminal status and associated cameras during operation, without disrupting functionality.
- Monitoring and control of the active alarms of each terminal.
- Ability to control various terminal elements remotely.



# OCCUPANCY



- Display of all the zones defined in the car parks.
- Display of occupied / free spaces, in real time.
- Display of traffic light status (free/full) of the car parks.

# NOTIFICATIONS



- Monitoring and managing notifications from one or multiple car parks, including alarms, exceptions, and user messages

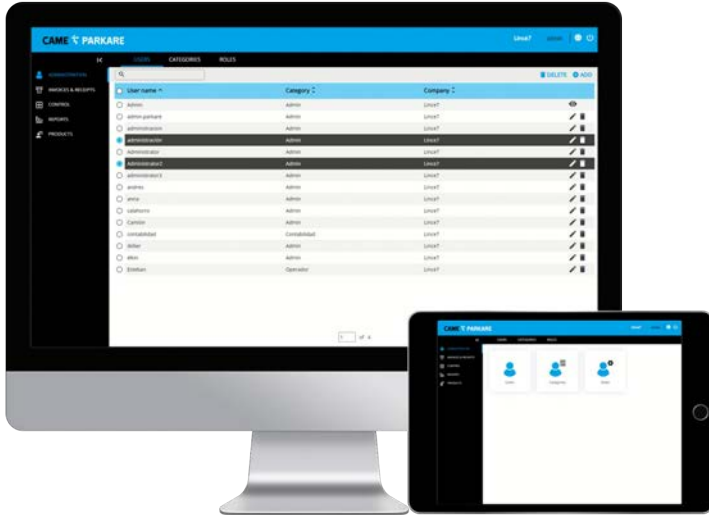
# HISTORICAL



- Displays a complete log of all operations and events within the car park.



## USERS ADMINISTRATION



**LINC 7** offers user access management through the assignment of categories and roles, organised hierarchically.

- Each user is given a system access credential along with an assigned category and the permissions associated with their role.
- Users with the highest level of permissions (administrators) can create new roles, categories, and users, and define how they are grouped and assigned.



## REPORTS



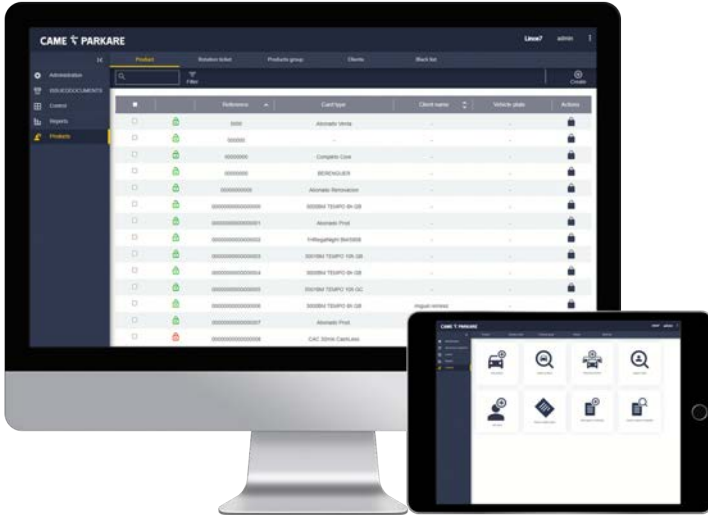
**LINC 7** offers a wide range of fully customisable and configurable reports, with multiple filters and export options in all major standard formats. Each report is designed to help customers optimise the management of their parking systems.

- Multiple filters
- Export to all main standard formats
- Ready to use with a single click
- Designed to optimise parking management
- Reports on parking stay and use of the car park.
- Pool group reports
- Deferred payment reports
- Comparative analysis by days, weeks, months...
- Full stay reports
- Statistical reports:
  - Collections
  - Means of payment
  - Invoices and receipts
  - Sales
  - Wallet products
  - Alarms, etc.

Using all stored information, LINC 7 can generate various reports to provide detailed insights into car park management and support decision-making.



## CUSTOMERS & PRODUCTS MANAGEMENT

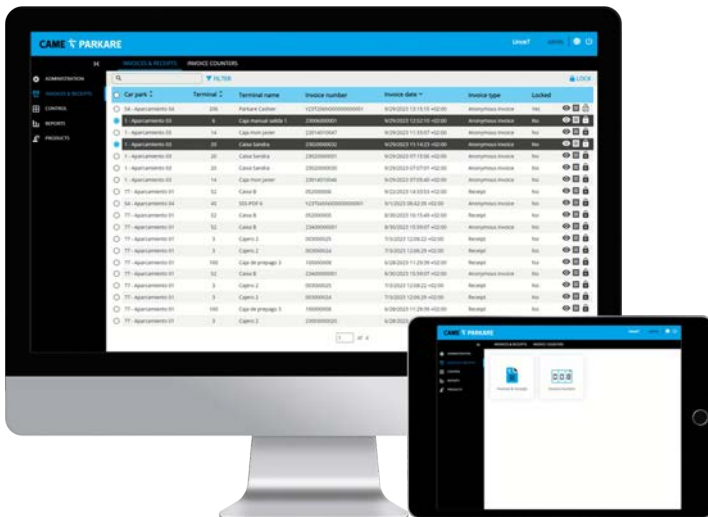


**LINC 7** allows detailed and centralised management of all customers and products in the car parks.

- Centralised management of multi-parking products
- Wide variety of products: rotation tickets, subscribers, time value products, monetary value, hourly periods, discounts, balances, TAG...
- Product registration, modification, consultation and deletion
- Management of the behaviour associated with each of the products
- Registration, modification, search and deletion of clients and products associated with each of them
- Blacklist management
- Different filters and search options for rotation tickets.

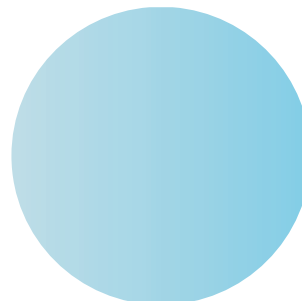
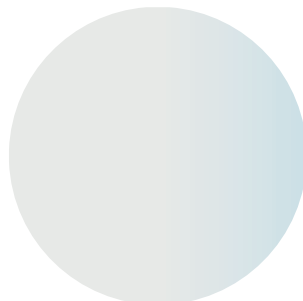


## INVOICES & RECEIPTS



**LINC 7** allows centralised management and viewing of Invoices / Receipts

- List of all invoices / receipts for each car park
- Extensive search options and filters
- Detailed view of each invoice / receipt
- Invoices / receipts are shown exactly as delivered to customers
- Invoice counters: shows last number of each invoice series
- Allows the last invoice number to be changed (according to configuration)



03 ≡

# THE COMPANY



**MANY  
CULTURES,  
ONE DESTINY**

Thanks to our brands, we position ourselves as a **global technology partner** capable of supporting **system integration**.

**CAME,  
THE GLOBAL  
PARTNER.**

# FOREVER INNOVATORS



For over 50 years, CAME Group has channelled its passion and investment into pioneering new technologies. With the confidence of our customers behind us, we've grown into a global leader and reliable partner for integrated solutions that automate, control, and secure residential, public, and urban spaces. Our mission is to create intelligent, safe, and sustainable environments where people can live and work with comfort and confidence.

We have built strong relationships with many professional installers who share CAME's values and bring innovation into the lives of our customers worldwide. Our ongoing evolution results in solutions designed for people. Our technology plays a strategic role in shaping new ways of thinking about, and living in, the future.

## THE CAME GROUP

### ALWAYS ONE STEP AHEAD

We are a leading brand in designing integrated solutions for the automation, control, and security of residential, public, and urban environments, creating intelligent spaces that enhance people's well-being.

Our continuous growth is also driven by the acquisition of new companies, enabling us to expand our product lines and broaden the possibilities we offer.

The Group's solutions cover a wide range — from entrance automation and video entry systems to advanced systems for managing automatic parking facilities, pedestrian access control with turnstiles, road barriers, automatic bollards, road blockers, and high-security vehicular access solutions.

Today, our unique and forward-looking vision makes us an innovative and reliable technology partner for customers worldwide.



CAME  BPT

CAME  PARKARE

CAME  URBACO

CAME  GO

CAME  ENTROTEC

CAME  KMS

CAME  ÖZAK

CAME  NEPOS

# OUR WORLDWIDE NETWORK

CAME is a trusted technology partner for projects that require integrated systems to enhance the quality of living spaces, whether private or public. Our products are designed to control the home and manage urban and commercial environments.

We are a global network. From our headquarters in Treviso — the heart of the Group — we coordinate **10 manufacturing plants** and **4 R&D centres**. We operate **25 subsidiaries** and manage more than **40 warehouses** worldwide.

With the support of our commercial partners and distributors, we are present in over **110 countries**, guided by an integrated, global vision.

Across the Group, we pursue shared goals that go beyond individual specialisations. Thanks to the synergies among our divisions and brands, we embrace a unified way of working that celebrates and strengthens our diversity.

## BRANCHES NORTH AND LATIN AMERICA

Brazil  
Chile  
Mexico  
Peru  
USA





2023 TURNOVER  
(MLN EUROS)



PRODUCTION  
PLANTS



R&D  
CENTRES



DIRECT  
BRANCHES



COUNTRIES WITH  
PARTNERS AND  
DISTRIBUTORS



WAREHOUSES IN THE  
WORLD

## BRANCHES EUROPE

Italy  
Belgium  
Croatia  
France  
Germany  
Ireland  
Netherlands  
Poland  
Portugal  
Russia  
Spain  
The United  
Kingdom  
Turkey

## CAME HEADQUARTERS

Treviso, Italy

## BRANCHES ASIA

United Arab Emirates  
China

# OUR VALUE PROPOSITION

Our value proposition is to share our long-standing experience and deep knowledge of urban mobility, providing our skilled team to support customers in developing comprehensive software solutions or specific integrable modules.

# OUR VALUE-ADDED

We develop integrated, intelligent, and sustainable solutions fully tailored to the new mobility ecosystem, with a focus on delivering the best user experience.



# SHARED VALUES



## WORK AS A TEAM



We share  
genuine passion  
and perseverance

## START WITH THE CUSTOMER



We set the  
customers as  
our first priority

## PURSUE INNOVATION



We foster  
curiosity and  
explore new ideas

## ACHIEVE GREAT RESULTS



We always  
aim for new  
challenging goals

## DO THE RIGHT THING



We think that  
integrity brings  
trust and reliability

## CAME PARKARE

Unit 1B  
Sills Road  
Willow Farm Business Park  
Castle Donington  
DE74 2US

Tel: 0844 371 70 72



© CAME PARKARE - PKX0925 - 2025 - EN UK  
CAME RESERVES THE RIGHT TO MAKE ANY CHANGES TO THIS DOCUMENT AT ANY TIME.  
YOU MAY NOT EVEN PARTIALLY REPRODUCE THIS DOCUMENT.



**CAME S.p.A.**  
has the following Quality, Environmental  
and Safety certifications:  
ISO 9001  
ISO 14001  
ISO 45001